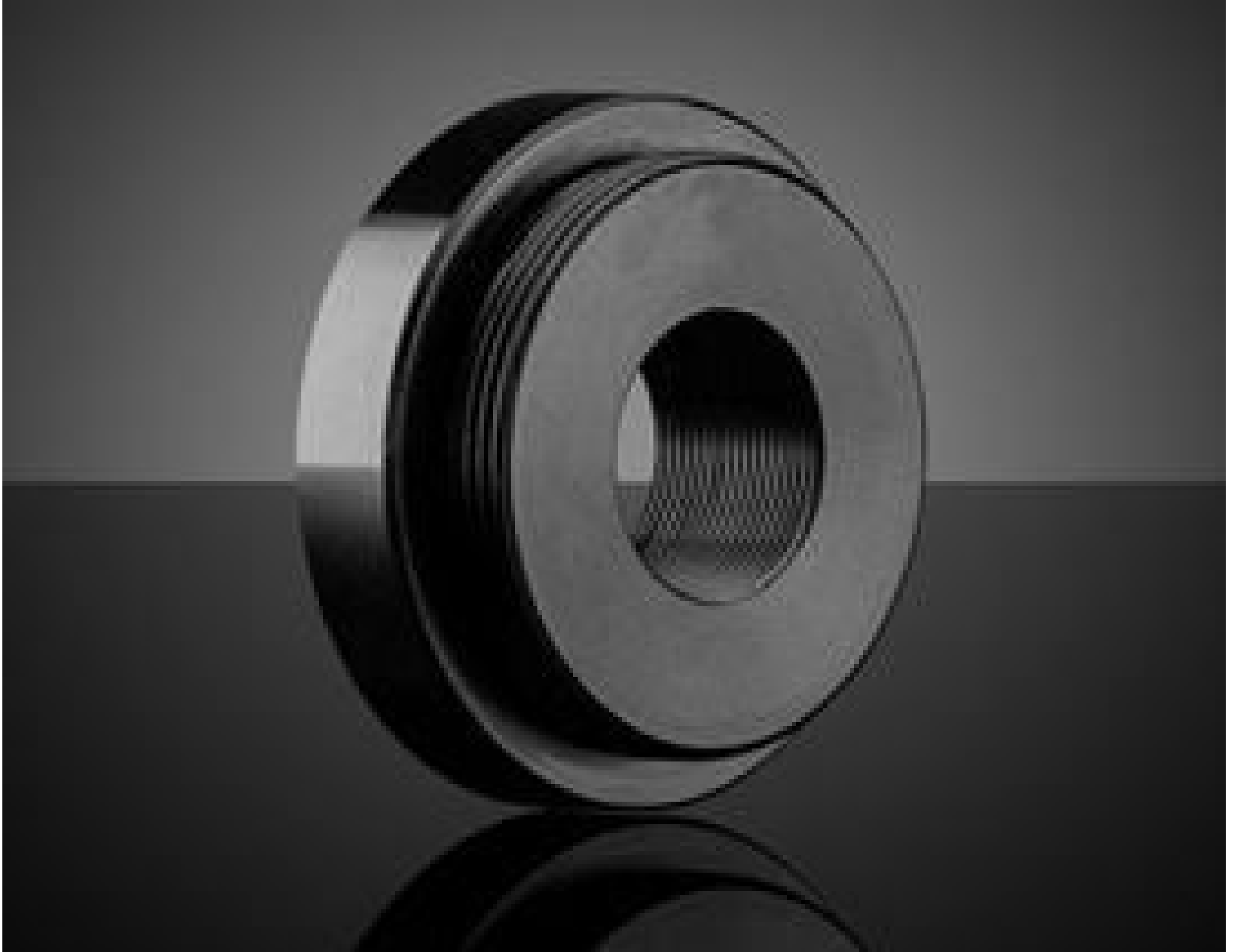


TECHSPEC® S-Mount Female to C-Mount Male Step-Down Adapter



Female S to Male C Adapter, #63-945

Stock **#63-945** **20+ In Stock**

A\$95²⁰

ADD TO CART

Volume Pricing	
Qty 1-4	A\$95.20 each
Qty 5-9	A\$84.80 each
Qty 10-25	A\$78.40 each
Need More?	Request Quote

Product Downloads

SPECIFICATIONS

General

Thread Adapter

Type:

Function:

Physical & Mechanical Properties

6.0 **Extension Length (mm):**

Construction:
Black Anodized Aluminum (6061-T6)

10.0 **Total Length (mm):**

30.0 **Outer Diameter (mm):**

12.0 **Clear Aperture CA (mm):**

Threading & Mounting

S-Mount to C-Mount **Thread Type:**

Female to Male **Thread Termination:**

Regulatory Compliance

RoHS 2015:
[Compliant](#)

Certificate of Conformance:
[View](#)

REACH 241:
[Compliant](#)

PRODUCT DETAILS

- Adapt All Available Tube System Thread Types to One Another
- Low Profile Design to Minimize Extension Length
- Black Anodized Aluminum Construction

TECHSPEC® C, S, and T-Mount Thread Adapters ensure that all [Tube System](#) thread types are compatible with one another. This includes C, S, and T-Mount threads, TECHSPEC Multi-Element Tube System threads (M29 x 0.75), ID1 (1.035" x 40 TPI, equivalent to SM1 thread specifications), and ID05 (0.535" x 40 TPI, equivalent to SM05 thread specifications). All thread adapters have a low-profile design to minimize extension length. They also have a black anodized aluminum construction to ensure minimal reflections within a system. TECHSPEC C, S, and T-Mount Thread Adapters are ideal for system expansion and work with any optical component that uses the supported thread types.