

[All Products](#) / [Optomechanics](#) / [Manual Translation Stages and Slides](#) / [Manual Stages and Slides](#)

Micro Manual Positioning Stages



- Two Micro Sizes Available
- Versions with Covered Rails
- Three Travel Selections
- X, XY, and XYZ Axis Models

Common Specifications

Physical & Mechanical Properties

Guide System:	Ball Bearing	Drive Orientation:	Center Drive
Construction:	Aluminum Body, Stainless Steel Rails		

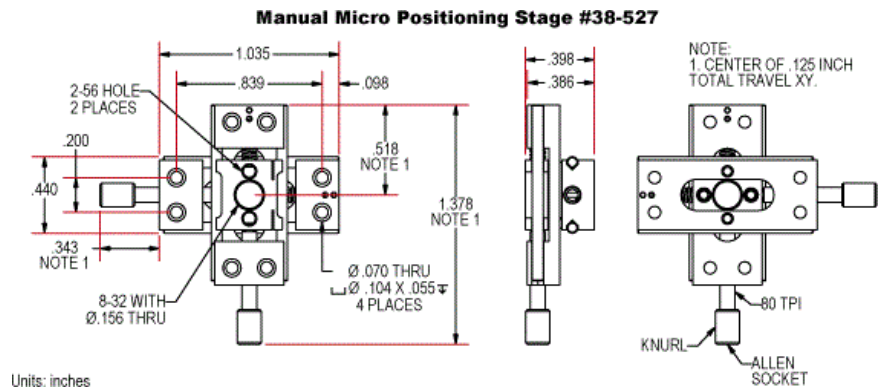
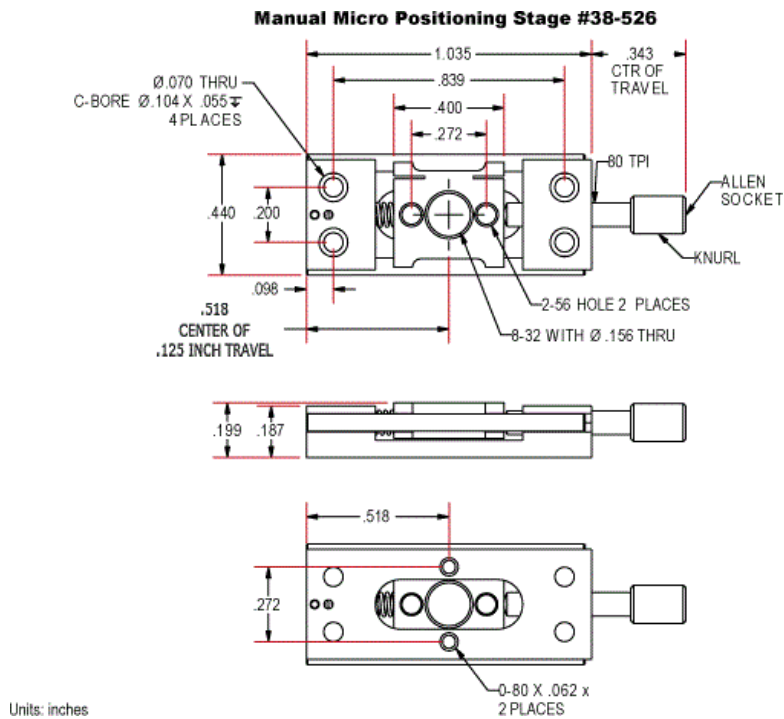
Optical Properties

Wobble (mrad):	0.01
-----------------------	------

Hardware & Interface Connectivity

Type of Drive:	Fine Screw (80 Pitch)
-----------------------	-----------------------

Technical Information



NOTE: 1. CENTER OF .125 INCH TOTAL TRAVEL XYZ

Units: inches

Ø .070 THRU
C-BORE Ø .104 X .055 ±
4 PLACES

1.735

.635 CTR OF TRAVEL

1.350

.539

.428

.80 TP I

ALLEN SOCKET

KNURL

.663

.270

.285

.960 CENTER OF .05 INCH TRAVEL

2-56 HOLE 2 PLACES

5/16-24 WITH Ø .275 THRU

.282

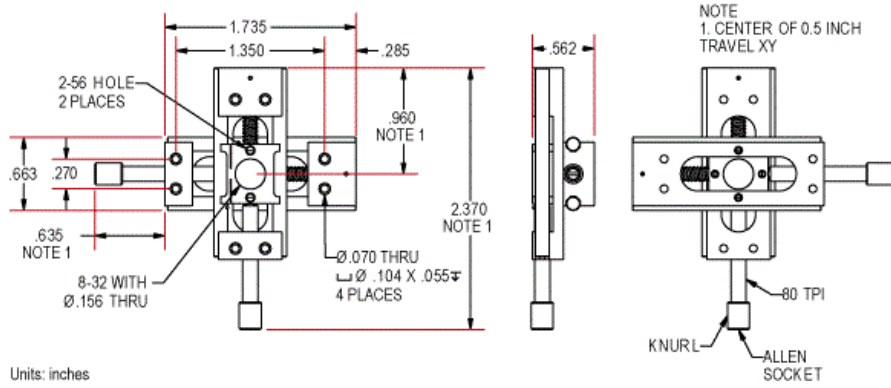
.960

.428

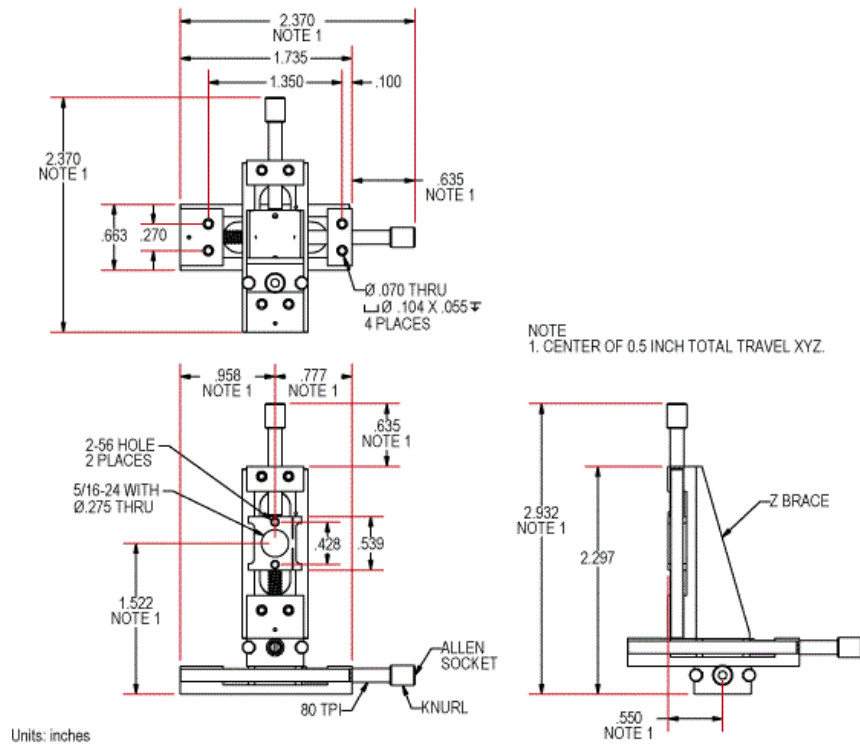
0-80 X .094 ±
2 PLACES

inches

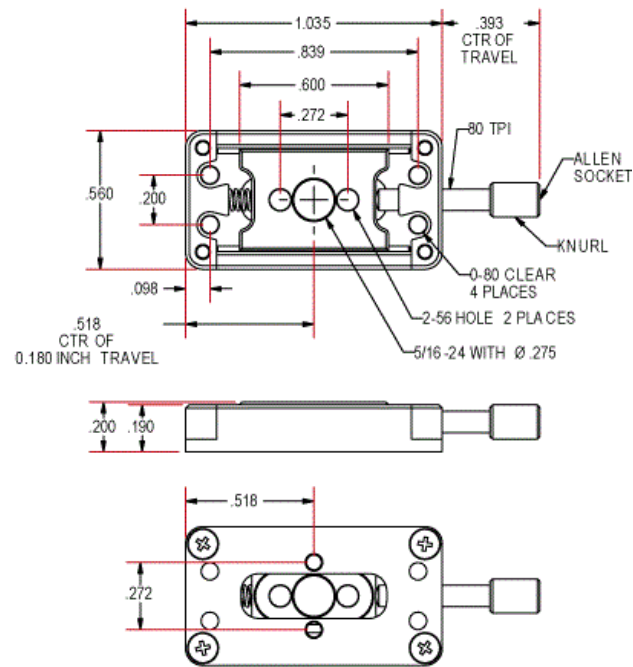
Manual Micro Positioning Stage #38-532



Manual Micro Positioning Stage #38-533

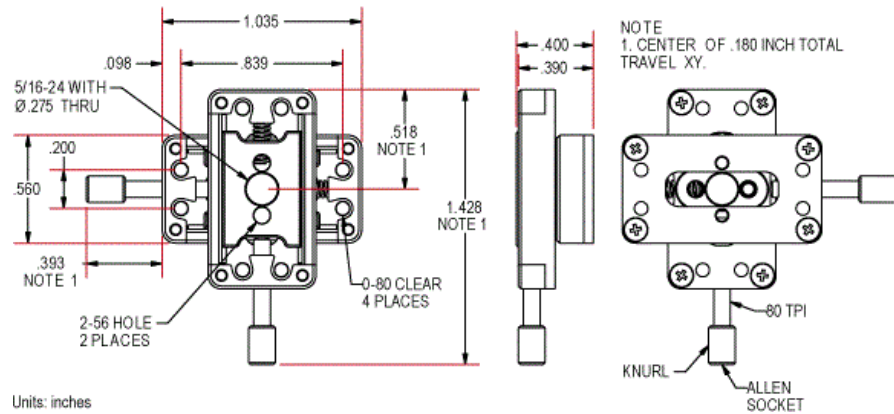


Manual Micro Positioning Stage #56-416



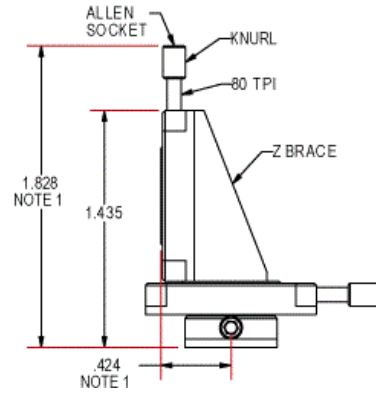
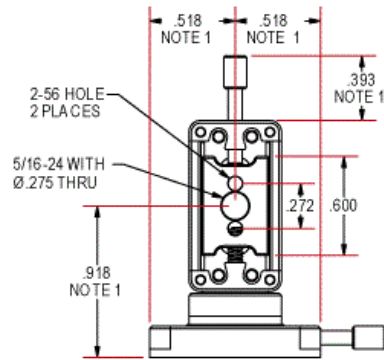
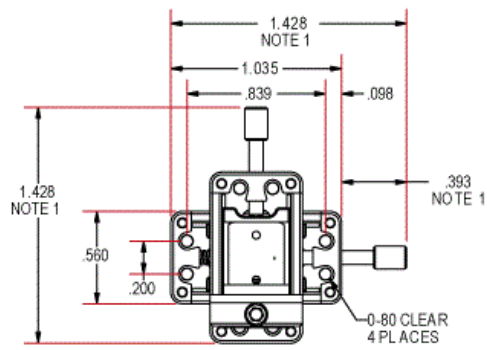
Units: inches

Manual Micro Positioning Stage #56-417



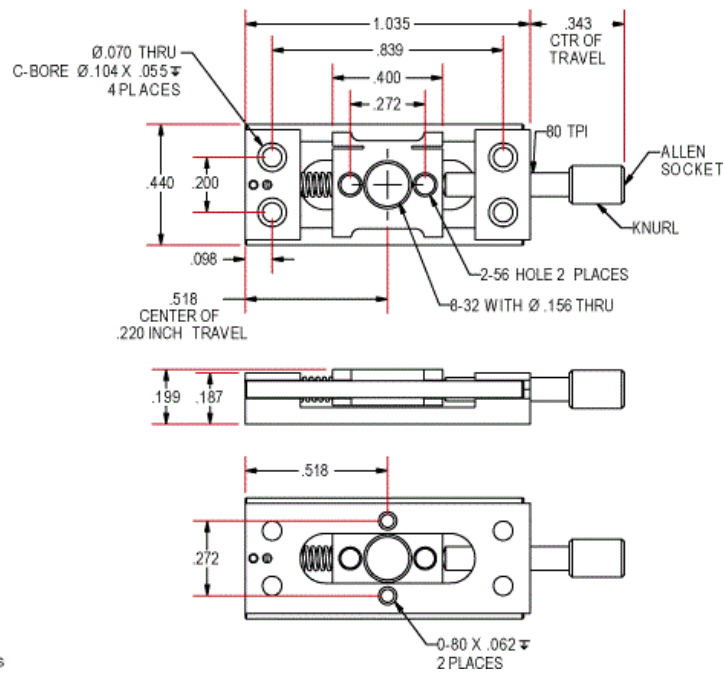
Units: inches

Manual Micro Positioning Stage #56-418



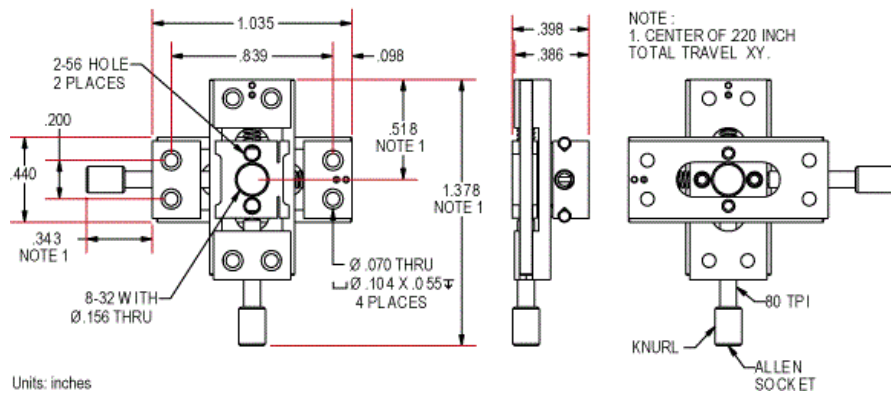
Units: inches

Manual Micro Positioning Stage #56-419



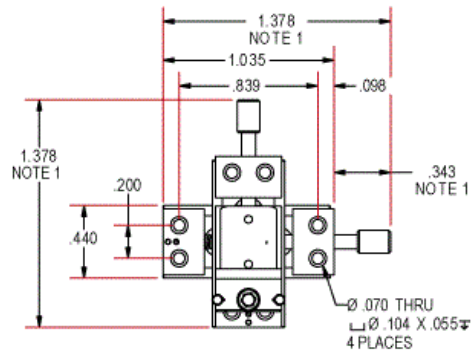
Units: inches

Manual Micro Positioning Stage #56-420

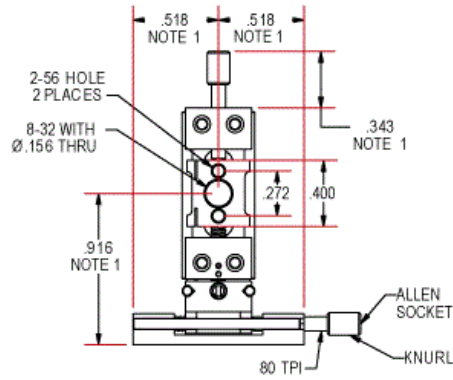


Units: inches

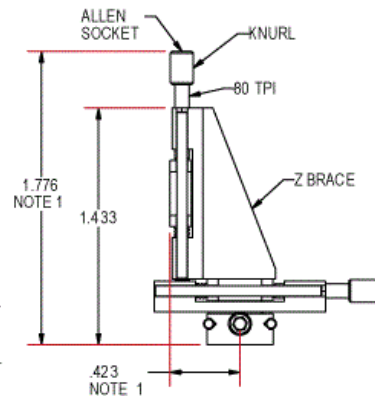
Manual Micro Positioning Stage #56-421



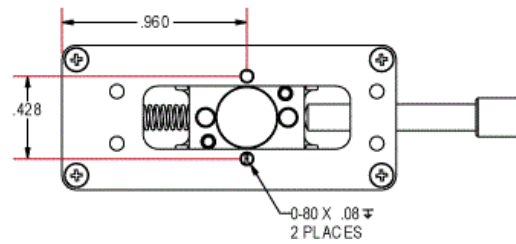
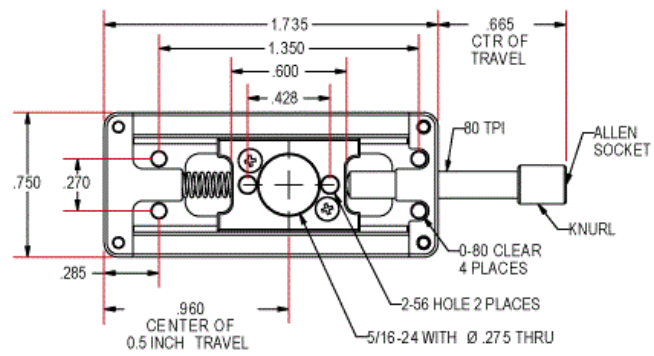
NOTE:
1. CENTER OF .220 INCH TOTAL
TRAVEL XYZ.



Units: inches

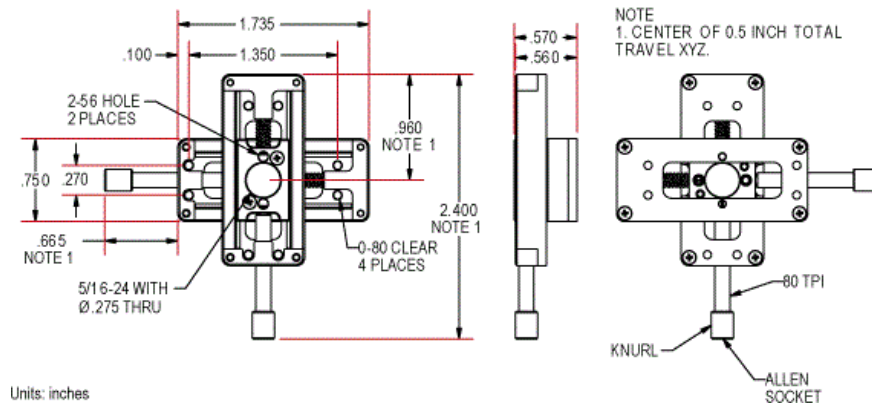


Manual Micro Positioning Stage #56-422

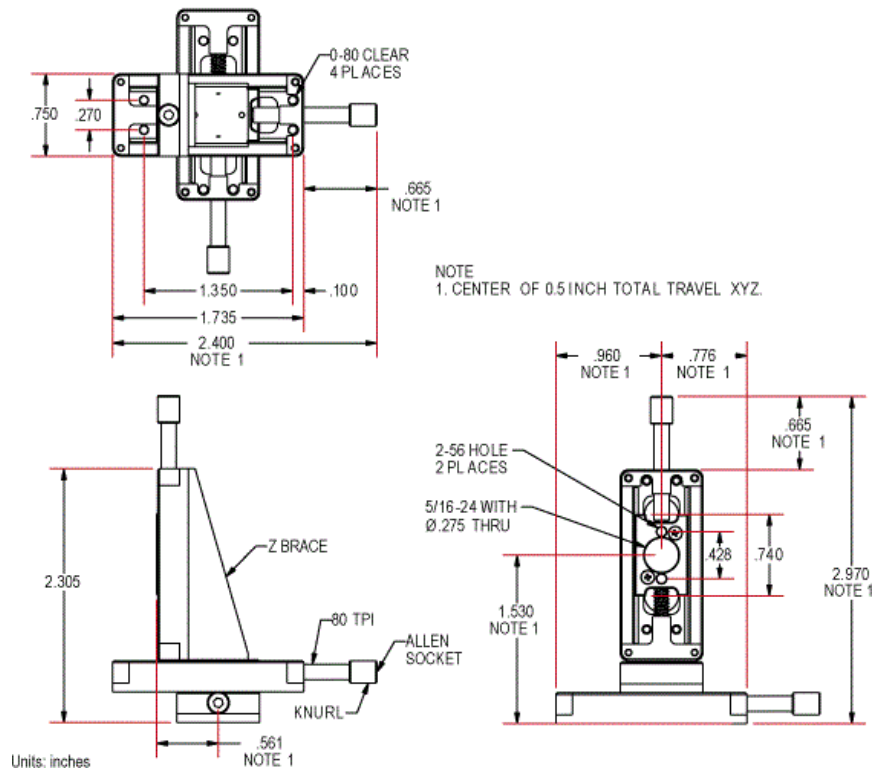


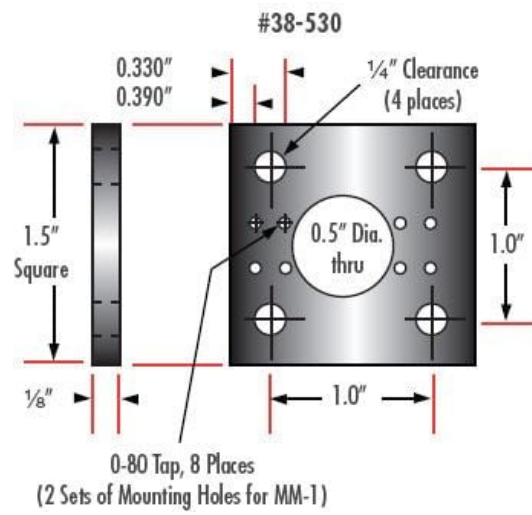
Units: inches

Manual Micro Positioning Stage #56-423

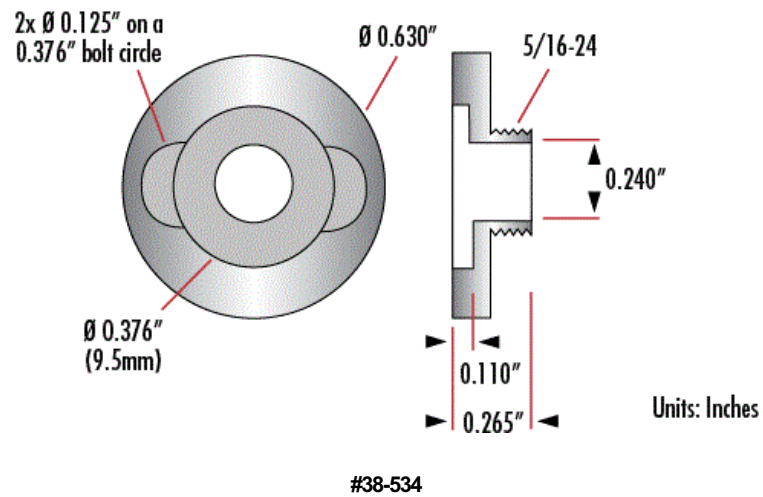


Manual Micro Positioning Stage #56-424

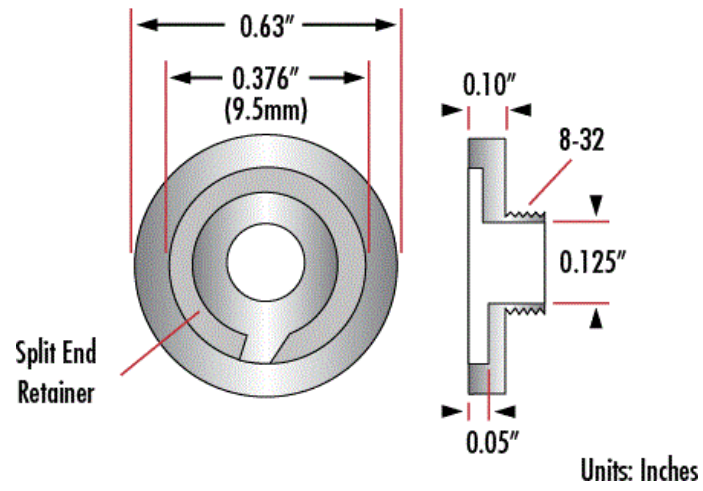




Pinhole Adapter for Stage Type B, #38-534



Pinhole Adapter for Stage Type A, #38-529



#38-529

Products

Type of Movement	Type	Type of Drive	Stage Size (inches)	Travel (inches)	Center Hole	Stock Number	Price	Buy
Linear (X)	English	Fine Screw (80 Pitch)	0.44 x 1.03	0.125	0.155" (3.9mm) Thru with 8-32 TPI Threaded	#38-526	A\$458.14	2 In Stock
Linear (X)	English	Fine Screw (80 Pitch)	0.44 x 1.03	0.22	0.155" (3.9mm) Thru with 8-32 TPI Threaded	#56-419	A\$494.40	1 In Stock
Linear (X)	English	Fine Screw (80 Pitch)	0.56 x 1.03	0.125	0.155" (3.94mm) thru with 8-32 tap	#56-416	A\$494.40	3 In Stock
Linear (X-Y)	English	Fine Screw (80 Pitch)	0.44 x 1.03	0.125	0.155" (3.9mm) Thru with 8-32 TPI Threaded	#38-527	A\$889.92	1 In Stock
Linear (X-Y)	English	Fine Screw (80 Pitch)	0.44 x 1.03	0.22	0.155" (3.9mm) Thru with 8-32 TPI Threaded	#56-420	A\$955.84	1 In Stock
Linear (X-Y)	English	Fine Screw (80 Pitch)	0.56 x 1.03	0.125	0.155" (3.94mm) thru with 8-32 tap	#56-417	A\$889.92	1 In Stock
Linear (X-Y-Z)	English	Fine Screw (80 Pitch)	0.44 x 1.03	0.125	0.155" (3.9mm) Thru with 8-32 TPI Threaded	#38-528	A\$1,268.96	1 In Stock
Linear (X-Y-Z)	English	Fine Screw (80 Pitch)	0.44 x 1.03	0.22	0.155" (3.9mm) Thru with 8-32 TPI Threaded	#56-421	A\$1,425.52	1 In Stock

Linear (X-Y-Z)	English	Fine Screw (80 Pitch)	0.56 x 1.03	0.125	0.275" (7.0mm) Thru with 5/16-24 TPI Thread	#56-418	A\$1,301.92	Contact Us
Linear (X)	English	Fine Screw (80 Pitch)	0.66 x 1.74	0.5	0.275" (7.0mm) Thru with 5/16-24 TPI Thread	#38-531	A\$458.14	9 In Stock
Linear (X)	English	Fine Screw (80 Pitch)	0.75 x 1.74	0.5	0.275" (7.0mm) Thru with 5/16-24 TPI Thread	#56-422	A\$494.40	4 In Stock
Linear (X-Y)	English	Fine Screw (80 Pitch)	0.66 x 1.74	0.5	0.275" (7.0mm) Thru with 5/16-24 TPI Thread	#38-532	A\$889.92	1 In Stock
Linear (X-Y)	English	Fine Screw (80 Pitch)	0.75 x 1.74	0.5	0.275" (7.0mm) Thru with 5/16-24 TPI Thread	#56-423	A\$889.92	1 In Stock
Linear (X-Y-Z)	English	Fine Screw (80 Pitch)	0.66 x 1.74	0.5	0.275" (7.0mm) Thru with 5/16-24 TPI Thread	#38-533	A\$1,268.96	2 In Stock
Linear (X-Y-Z)	English	Fine Screw (80 Pitch)	0.75 x 1.74	0.5	0.275" (7.0mm) Thru with 5/16-24 TPI Thread	#56-424	A\$1,301.92	1 In Stock



Copyright 2024, Edmund Optics Singapore Pte. Ltd, 18 Woodlands Loop #04-00, Singapore 738100

[PRIVACY POLICY](#) [COOKIE POLICY](#) [TERMS & CONDITIONS](#)

Phone: 1-800-363-1992 :

www.edmundoptics.com