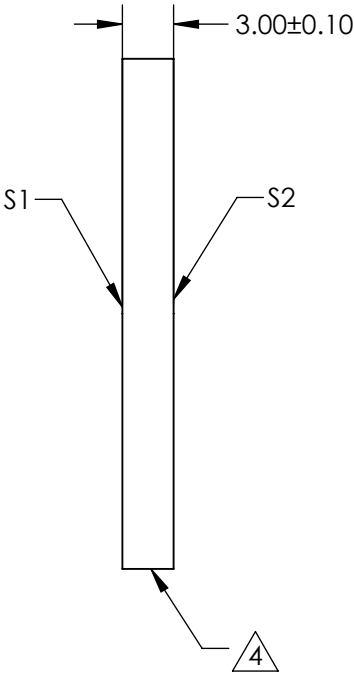
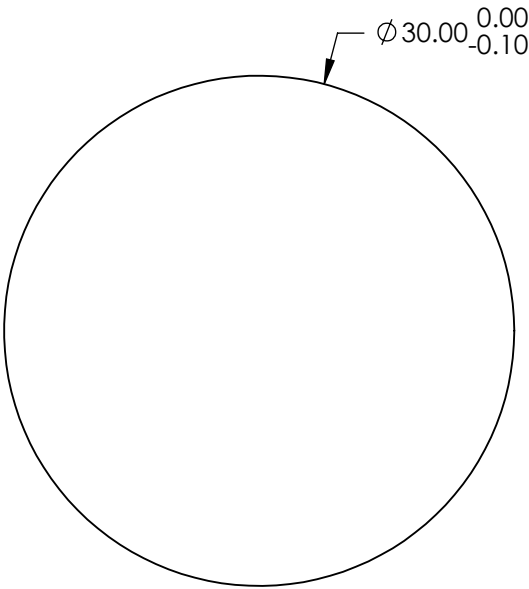


- NOTES:
- 1. SUBSTRATE:  
FUSED SILICA (CORNING 7980)
  - 2. S1 TO BE PARALLEL WITH S2 TO WITHIN <1 ARCMIN
  - 3. COATING (APPLY ACROSS CLEAR APERTURE)  
S1 & S2: VIS 0° (425-675nm)  
R(AVG) ≤0.4% @ 425 - 675nm

4. FINE GRIND SURFACE

5. ROHS COMPLIANT



**FOR INFORMATION ONLY:  
DO NOT MANUFACTURE  
PARTS TO THIS DRAWING**

SPECIFICATIONS SUBJECT TO CHANGE WITHOUT NOTICE  
DIMENSIONS ARE FOR REFERENCE ONLY

	S1	S2
SHAPE	PLANO	PLANO
SURFACE QUALITY	40 - 20	40 - 20
CLEAR APERTURE	Ø 27.00	Ø 27.00
BEVEL	PROTECTED AS NEEDED	PROTECTED AS NEEDED

THIRD ANGLE  
PROJECTION

ALL DIMS IN      mm

Edmund Optics®

TITLE	30mm Dia., 3mm Thick, VIS 0° Coated, λ/4 Fused Silica Window	
DWG NO	72385	SHEET 45 OF 84