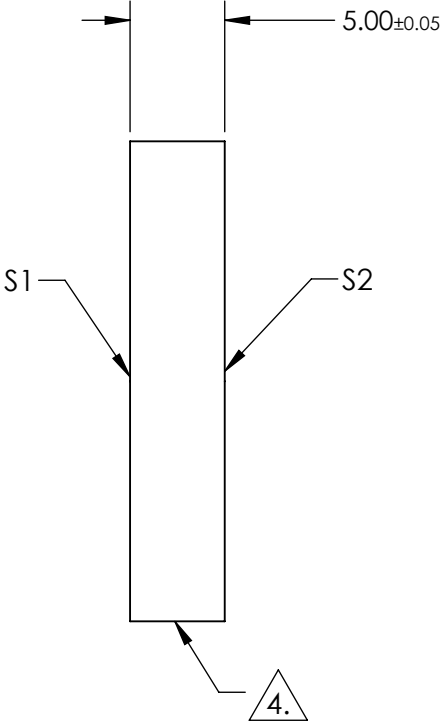
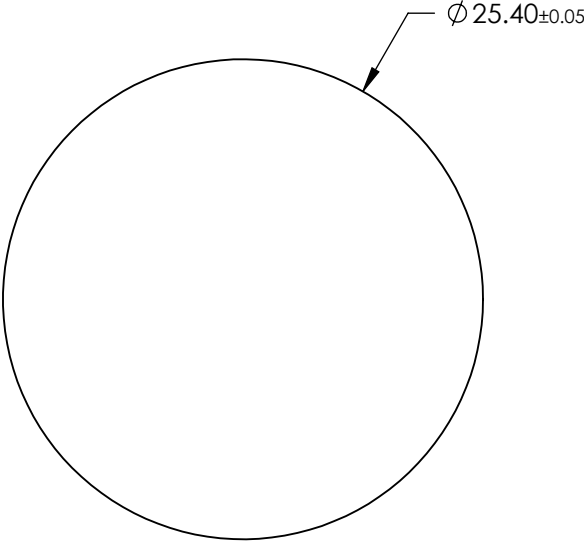
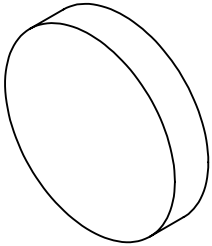


NOTES:

- 1. SUBSTRATE:  
SAPPHIRE (AL2O3)
- 2. SURFACE S2 TO BE PARALLEL WITH SUFACE S1 TO WITHIN  $\leq 3.5$  ARMIN
- 3. COATING (APPLY ACROSS CLEAR APERTURE)  
S1 & S2: R(AVG) <1% @ 1650 - 3000nm  
R(ABS) <2% @ 1650 - 3000nm

4. FINE GRIND SURFACE

5. ROHS COMPLIANT



**FOR INFORMATION ONLY:  
DO NOT MANUFACTURE  
PARTS TO THIS DRAWING**

SPECIFICATIONS SUBJECT TO CHANGE WITHOUT NOTICE  
DIMENSIONS ARE FOR REFERENCE ONLY

	S1	S2
SHAPE	PLANO	PLANO
CLEAR APERTURE	$\varnothing 22.86$	$\varnothing 22.86$
SURFACE FLATNESS	$2\lambda$	$2\lambda$
SURFACE QUALITY	80-50	80-50
BIREFRINGENCE (no-ne)	0.008	0.008
BEVEL	PROTECTED AS NEEDED	PROTECTED AS NEEDED



ALL DIMS IN mm

**Edmund Optics®**

TITLE 25.4mm Dia., 5mm Thick, BBAR (1650 - 3000nm)  
Coated Sapphire Window

DWG NO 25431 SHEET 56 OF 70