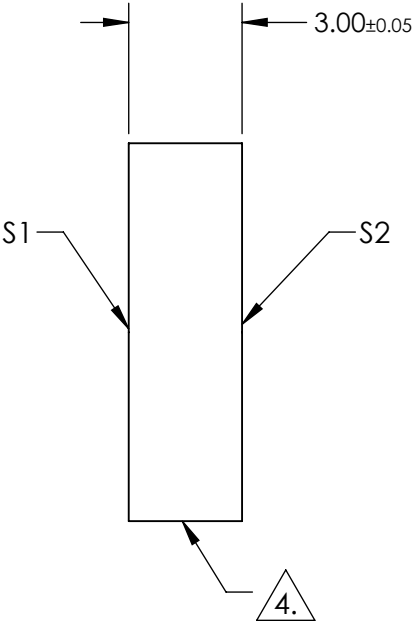
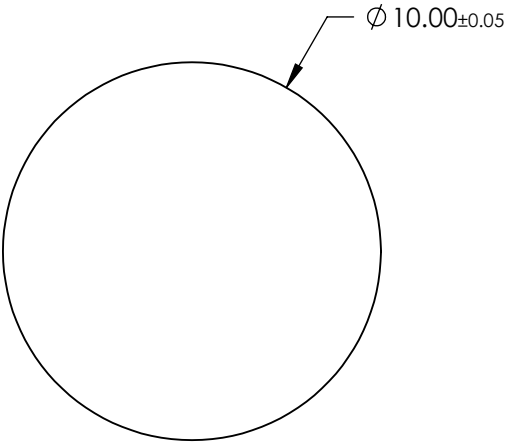
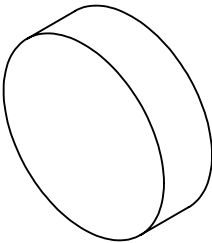


NOTES:

- 1. SUBSTRATE:  
SAPPHIRE (AL2O3)
- 2. SURFACE S2 TO BE PARALLEL WITH SUFACE S1 TO WITHIN  $\leq 3.5$  ARMIN
- 3. COATING (APPLY ACROSS CLEAR APERTURE)  
S1 & S2: R(ABS)  $\leq 1.5\%$  @ 750 - 800nm  
R(ABS)  $\leq 1.0\%$  @ 800 - 1550nm  
R(AVG)  $\leq 0.7\%$  @ 750 - 1550nm

4. FINE GRIND SURFACE

- 5. ROHS COMPLIANT



**FOR INFORMATION ONLY:  
DO NOT MANUFACTURE  
PARTS TO THIS DRAWING**

SPECIFICATIONS SUBJECT TO CHANGE WITHOUT NOTICE  
DIMENSIONS ARE FOR REFERENCE ONLY

	S1	S2
SHAPE	PLANO	PLANO
CLEAR APERTURE	Ø 9.00	Ø 9.00
SURFACE FLATNESS	2λ	2λ
SURFACE QUALITY	80-50	80-50
BIREFRINGENCE (no-ne)	0.008	0.008
BEVEL	PROTECTED AS NEEDED	PROTECTED AS NEEDED

THIRD ANGLE  
PROJECTION

ALL DIMS IN mm

 **Edmund Optics®**

TITLE	10mm Dia., 3mm Thick, NIR II AR Coated Sapphire Window	
DWG NO	25419	SHEET 44 OF 70