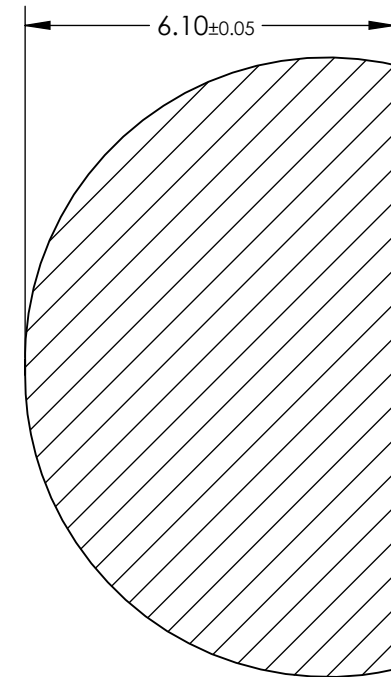
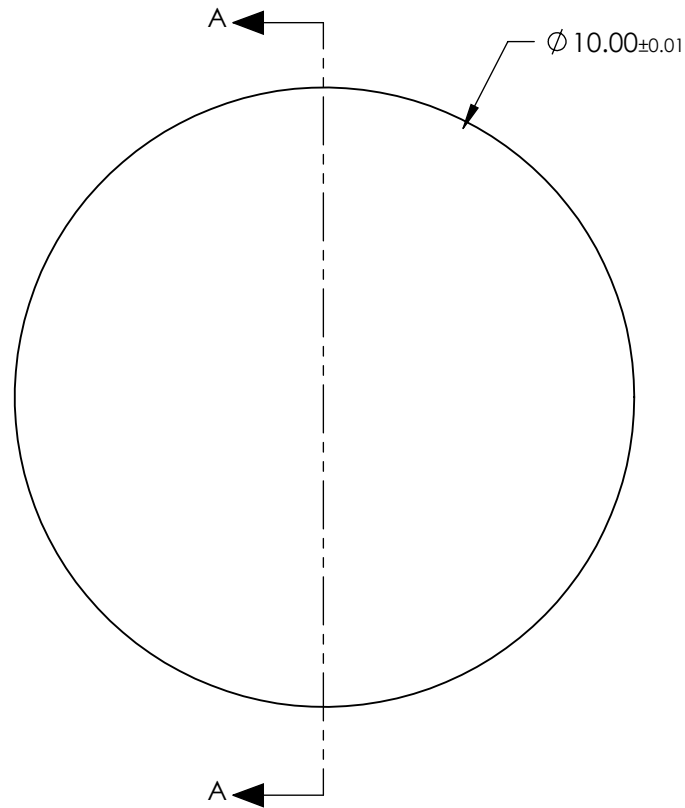


NOTES:

- 1. SUBSTRATE:
Silicon (Si)
- 2. COATING
NONE
- 3. FINISH:
POLISHED
- 4. ROHS COMPLIANT



SECTION A-A

**FOR INFORMATION ONLY:
DO NOT MANUFACTURE
PARTS TO THIS DRAWING**

SPECIFICATIONS SUBJECT TO CHANGE WITHOUT NOTICE
DIMENSIONS ARE FOR REFERENCE ONLY

EO® Edmund Optics®

THIRD ANGLE PROJECTION 		TITLE	10mm Dia., 6.1mm Thick, Uncoated, ISP Optics Silicon (Si) Hyper Hemispherical Lens	
ALL DIMS IN	mm	DWG NO	24726	SHEET 14 OF 19