

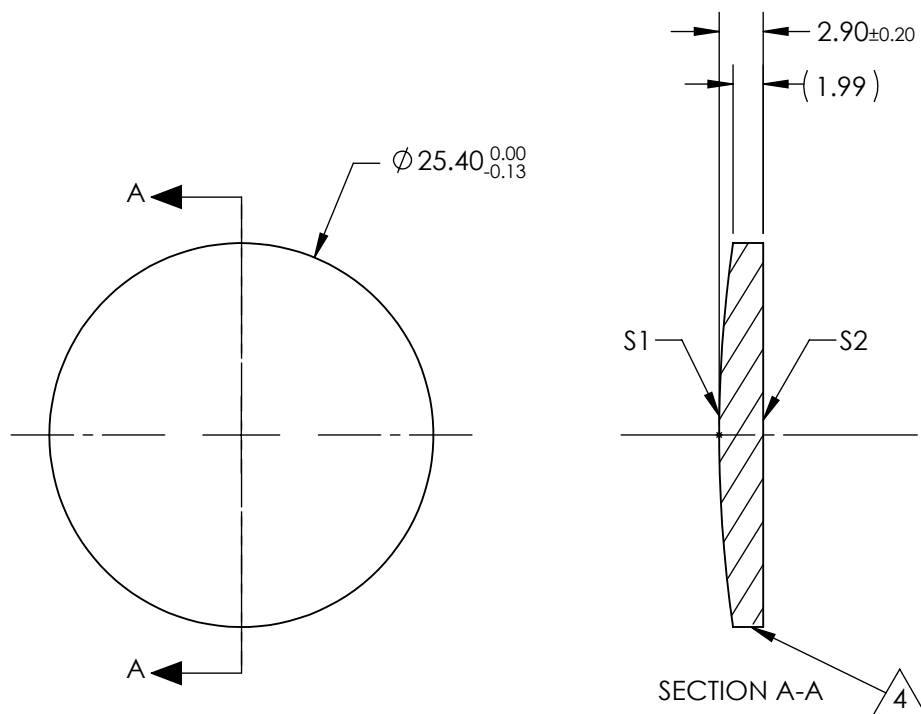
NOTES:

1. SUBSTRATE:  
Zinc Selenide (ZnSe), CVD Grade
2. CENTERING TOLERANCE:  
<3 ARCMIN
3. COATING (APPLY ACROSS CLEAR APERTURE)  
S1 & S2: R(AVG) <0.5% @ 8 - 12 $\mu$ m  
R(ABS) <1% @ 8 - 12 $\mu$ m

4. FINE GRIND SURFACE


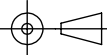
5. FOCAL LENGTH TOLERANCE:  $\pm 2\%$

6. ROHS COMPLIANT



**FOR INFORMATION ONLY:  
DO NOT MANUFACTURE  
PARTS TO THIS DRAWING**

SPECIFICATIONS SUBJECT TO CHANGE WITHOUT NOTICE  
DIMENSIONS ARE FOR REFERENCE ONLY

	S1	S2	EFL @ 10.6 $\mu$ m	63.5	 <b>Edmund Optics®</b>		
SHAPE	CONVEX	PLANO	BFL @ 10.6 $\mu$ m	62.34			
RADIUS	89.14	INFINITY			TITLE	25.4mm Dia. x 63.5mm FL, 8-12 $\mu$ m AR Coated, ISP Optics ZnSe Plano-Convex Lens	
IRREGULARITY AT 10.6 $\mu$ m	$\lambda/20$	$\lambda/20$					
SURFACE QUALITY	60-40	60-40	ALL DIMS IN		DWG NO	24985	
CLEAR APERTURE	$\varnothing 22.86$	$\varnothing 22.86$					
BEVEL	PROTECTED AS NEEDED	PROTECTED AS NEEDED	mm				SHEET 1 OF 1