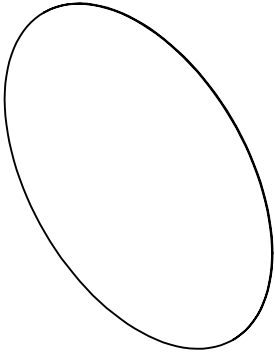
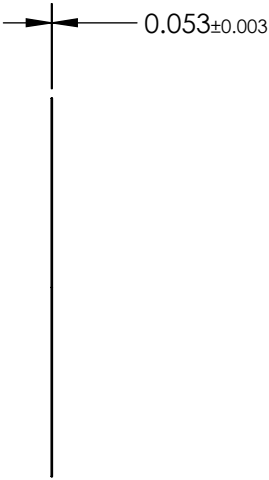
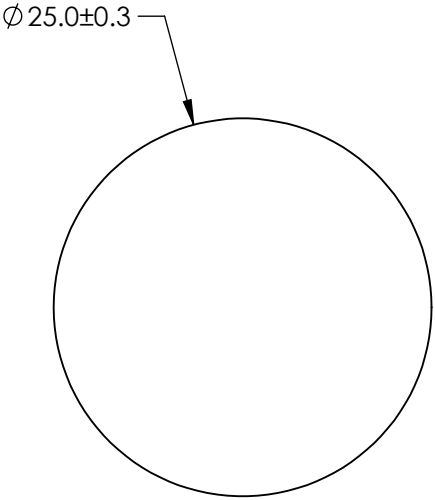


NOTES:

- 1. SUBSTRATE:
WP140HE
- 2. COATING (APPLY ACROSS COATING APERTURE)
TRANSMISSION: >89 %
- 3. RETARDANCE: $\lambda/4$
- 4. PHASE SHIFT: 90.00 °
- 5. HAZE: 1%
- 6. DESIGN WAVELENGTH: 588 nm
- 7. CONTRUCTION: POLARIZING FILM
- 8. ROHS: COMPLIANT



SPECIFICATIONS SUBJECT TO CHANGE WITHOUT NOTICE
DIMENSIONS ARE FOR REFERENCE ONLY

**FOR INFORMATION ONLY:
DO NOT MANUFACTURE
PARTS TO THIS DRAWING**

EO[®] Edmund Optics[®]

THIRD ANGLE PROJECTION 		TITLE	25mm Dia., $\lambda/4$ Retarder Film	
ALL DIMS IN	mm	DWG NO	25367	SHEET 1 OF 6