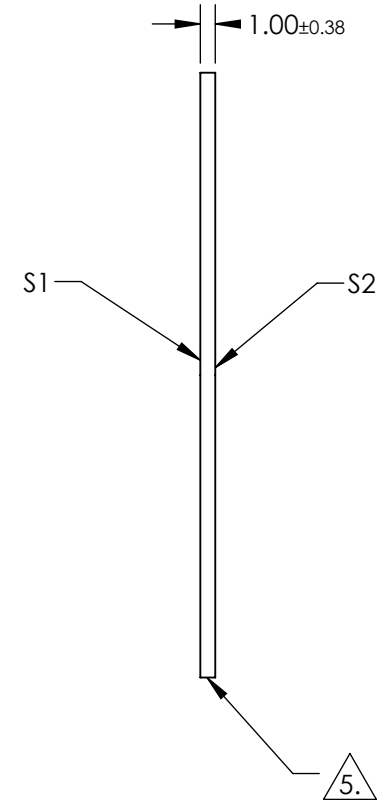
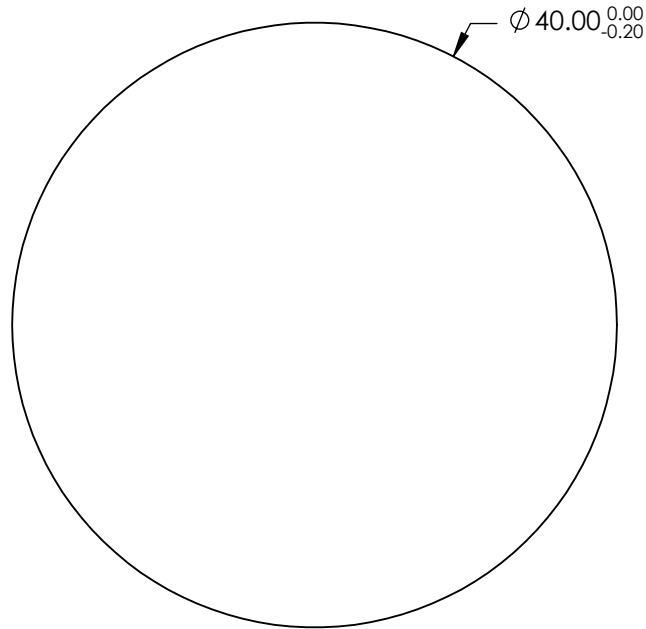


NOTES:

1. SUBSTRATE:  
FUSED SILICA
2. RoHS: COMPLIANT
3. SURFACE S2 TO BE PARALLEL TO SURFACE S1 TO WITHIN < 5 ARCMIN
4. COATING (APPLY ACROSS CLEAR APERTURE)

S1 & S2: NIR II (750-1550nm)  
 Rabs ≤1.5% @ 750 - 800nm Rabs ≤1.0% @ 800 - 1550nm Ravg ≤0.7% @ 750 - 1550nm

5. FINE GRIND SURFACE



**FOR INFORMATION ONLY:  
DO NOT MANUFACTURE  
PARTS TO THIS DRAWING**

SPECIFICATIONS SUBJECT TO CHANGE WITHOUT NOTICE  
 DIMENSIONS ARE FOR REFERENCE ONLY

	S1	S2
SHAPE	PLANO	PLANO
SURFACE ACCURACY	1λ	1λ
SURFACE QUALITY	60-40	60-40
CLEAR APERTURE	ϕ 36	ϕ 36
BEVEL	PROTECTED AS NEEDED	PROTECTED AS NEEDED



ALL DIMS IN

mm

**EO**® Edmund Optics®

TITLE

40mm Dia. 1mm Thick NIR II Coated, 1λ Fused Silica Window

DWG NO

23335

SHEET  
35 OF 35