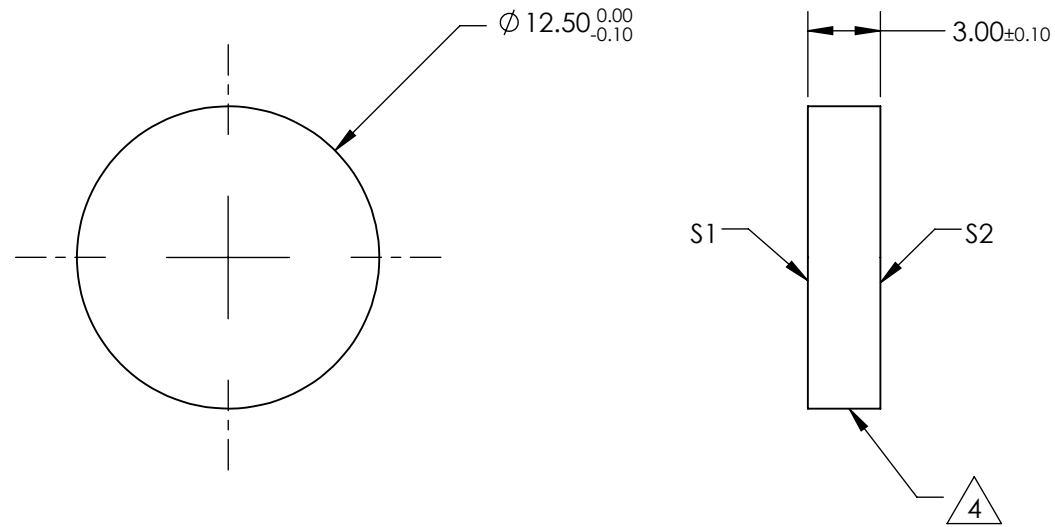
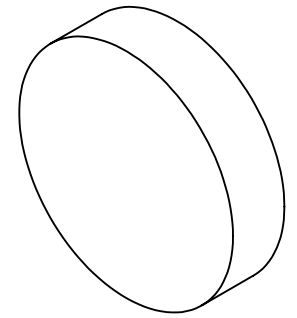


NOTES:

1. SUBSTRATE:
EXCIMER GRADE UV FUSED SILICA
2. SURFACE S2 TO BE PARALLEL WITH S1 TO 5 arcsec
3. COATING (APPLY ACROSS CLEAR APERTURE)
S1 & S2: R(ABS) < 0.25% @ 355nm, AOI: 0°

4. FINE GRIND SURFACE

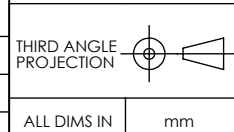
5. RoHS COMPLIANT



**FOR INFORMATION ONLY:
DO NOT MANUFACTURE
PARTS TO THIS DRAWING**

SPECIFICATIONS SUBJECT TO CHANGE WITHOUT NOTICE
DIMENSIONS ARE FOR REFERENCE ONLY

	S1	S2
SHAPE	PLANO	PLANO
SURFACE QUALITY	10 - 5	10 - 5
DESIGN WAVELENGTH	355nm	355nm
BEVEL	PROTECTIVE AS NEEDED	PROTECTIVE AS NEEDED



EO® **Edmund Optics**®

TITLE	12.5mm DIA. 355nm LASER V-COAT, $\lambda/20$ FUSED SILICA WINDOW	
DWG NO	48206	SHEET 1 OF 1