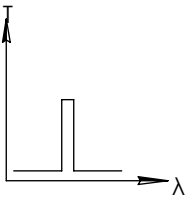
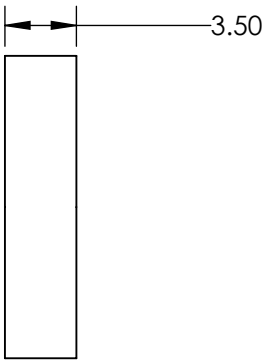
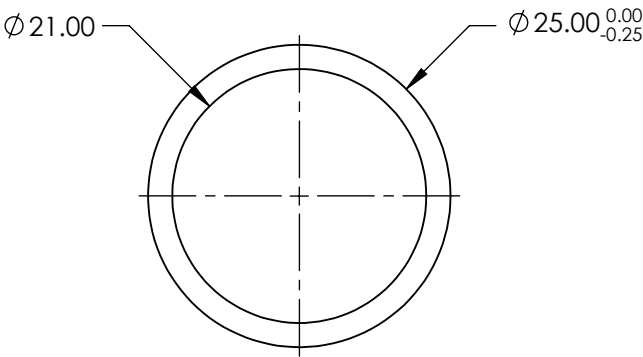
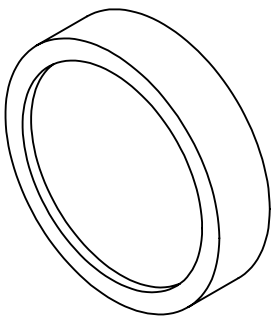


**FOR INFORMATION ONLY:
DO NOT MANUFACTURE
PARTS TO THIS DRAWING**



BANDPASS FILTER

| | VALUE |
|----------------------------|--------------------------------|
| OPTICAL DENSITY | ≥4.0 |
| CENTER WAVELENGTH (CWL) | 220 +3.0/-0.0 nm |
| FULL WIDTH HALF MAX (FWHM) | 10 ±2 nm |
| MINIMUM TRANSMISSION | >12 % |
| BLOCKING | 200 - 10000nm |
| SURFACE QUALITY | 80-50 |
| CONSTRUCTION | MOUNTED IN BLACK ANODIZED RING |
| COATING TYPE | TRADITIONAL COATED |

SPECIFICATIONS SUBJECT TO CHANGE WITHOUT NOTICE
DIMENSIONS ARE FOR REFERENCE ONLY



ALL DIMS IN

mm

TITLE

Ø25mm, 220nm x 10nm, MOUNTED
BANDPASS FILTER

DWG NO

67802

SHEET
1 OF 1